

SERIES 1450

Flooding and moisture detector

- Compact dimensions
- Detection of water and moisture
- Terminal connection
- 1450 with relay output
- 1451 with 9V battery and buzzer



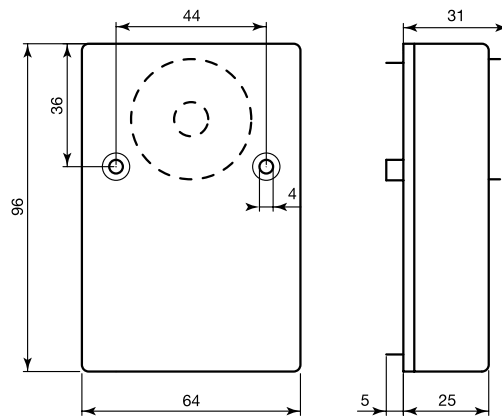
Sensor detecting water through 4 gold-plated supporting feet. It is normally used for the protection against the flooding of computing centers, boiler rooms, offices, laboratories, etc. It cannot be used with inflammable liquids.

Version **1450**, available with 12 or 24V DC power supply, is equipped with changeover relay output to control telephone combiners, alarm sirens, etc. In addition, it can be connected to several external feelers 1450 S (up to 10). For higher protection, it is also equipped with a moisture detector, whose sensitivity can be regulated with internal trimmer.

Version **1451**: standalone version of the sensor; supplied with 9V internal battery (not included). In case of flooding, it emits an acoustic signal through a powerful integrated buzzer.

GENERAL SPECIFICATIONS

Housing material	Thermoplastic, colors according to table
Operation	Detection of resistance between feet and internal coil
Connection type	Relay output (1450) or buzzer (1451), 1450 and 1450 24 V AC: terminals (2 for external feelers, 2 for power supply, 3 for relay output)
Operating temperature	+5°C to +50°C
IP grade	IP 40
Packaging	See table



ORDER CODES

Code	Power voltage	Max. consumption	Output	Color	Pcs./pack.	Package weight	Notes
1450	12/24V DC	30 mA	Changeover relay max 1 A, 30V DC	white	2	0,16 kg	can be connected to external feelers code 1450 S
1450 24 VCA	24V AC	30 mA	Changeover relay max 1 A, 30V DC	white	2	0,16 kg	can be connected to external feelers code 1450 S
1451	9V DC*	-	Buzzer	white	1	0,10 kg	

* Battery not included

ACCESSORIES AVAILABLE (see accessories page)

Code	Description
1450 S	External feeler for 1450

HEAT AND FLOODING DETECTORS